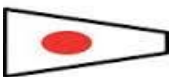
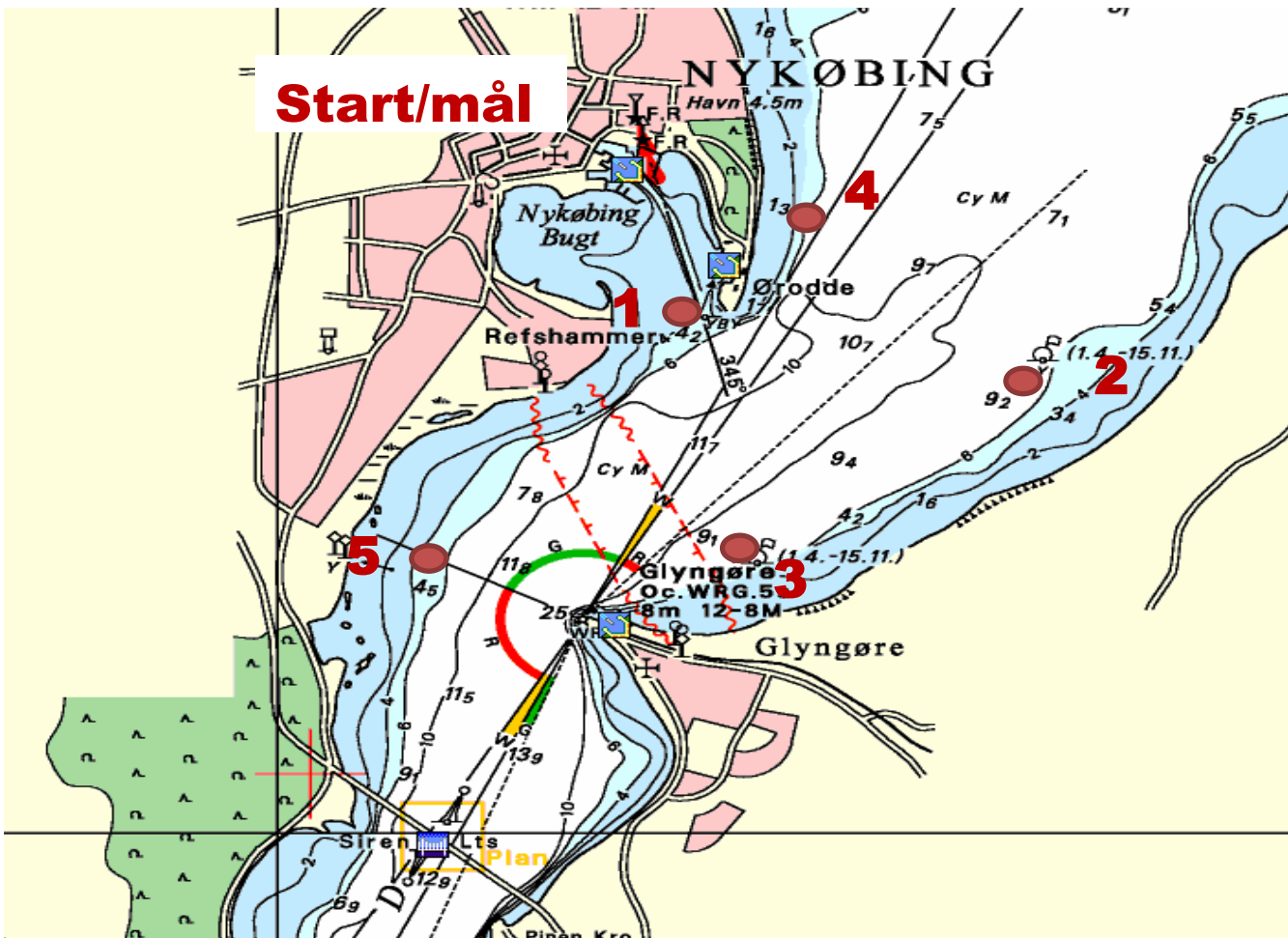
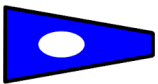


Baner - onsdagssejls forår 2020 –

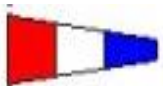
Start fra Nykøbing



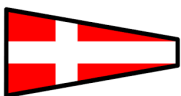
1: start – 1b – 2b- 4b – 2b – 4b – 2s – 1s – mål (Vind f. NV/SØ) 7,4



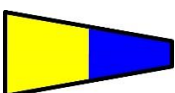
2: start – 1b – 2b – 1b – 2b – 1b – 2b – 1s – mål (Vind f. V/Ø) 7,6 sm



3: start – 1b – 3b – 1b – 3b – 1b – 3b – 1s – mål (Vind fra N/S) 7,5 sm



4: start – 1b – 2s -5b – 2b – 1s – mål (Vind fra NØ/SV) 7,8 sm



5: start – 1b – 2s -1s — mål (Vind fra alle retninger) 3,7 sm.

Bruges KUN ved svag (ingen) vind, 0-1 sekundmeter